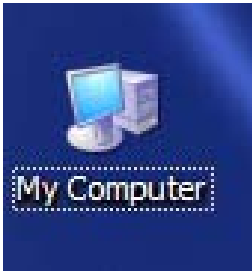


USB 2.0 Hard Drive Enclosure installation Guide

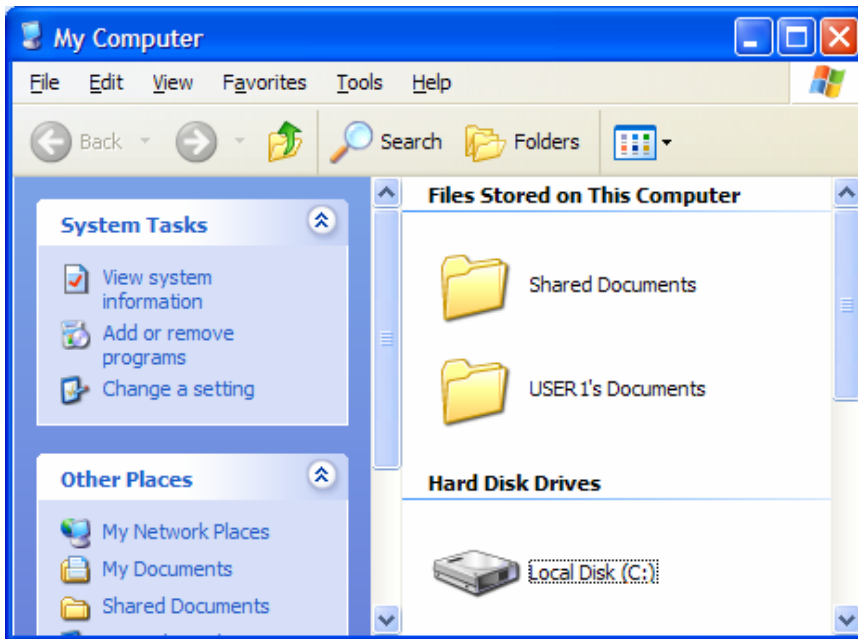
WinXP/Win2000/Win2003

The following step below are to partition and format the drive in WinXp/win2000/win2003 so windows can recognize the drive and ready for use:

- 1) Double Click onto “**my computer**” in the windows desktop as shown below:



- 2) Than double click onto “**change setting**” shown below:



- 3) Under control panel, click onto “**Administrative tools**’ shown below:



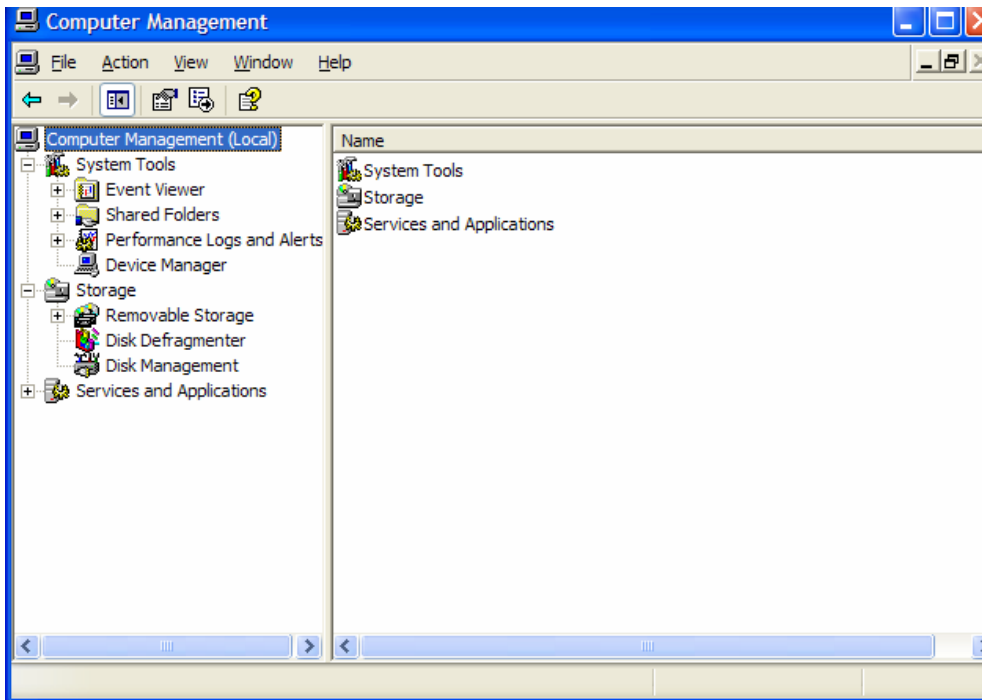
Administrative
Tools

4) Than Click onto “**Computer Management**” Shown below:

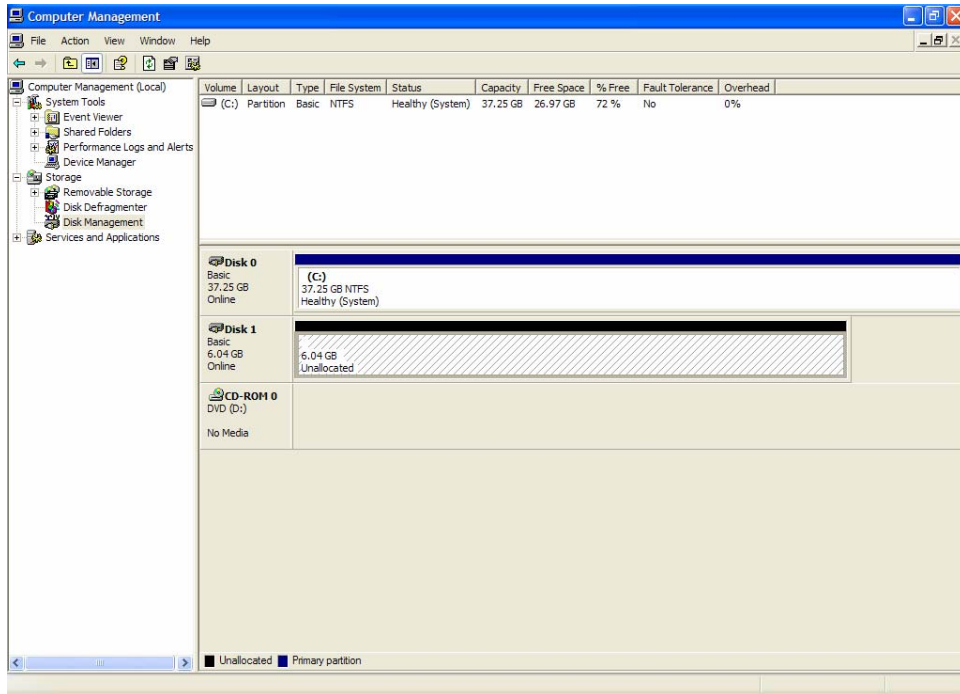


Computer Management
Shortcut
2 KB

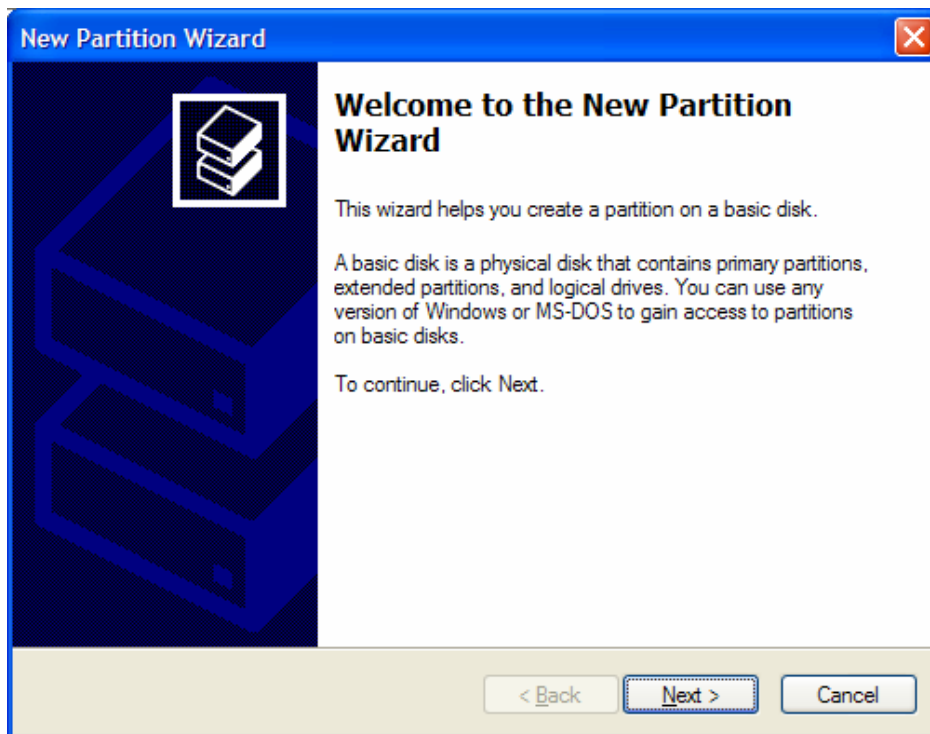
5) Under Computer Management goto Disk Management



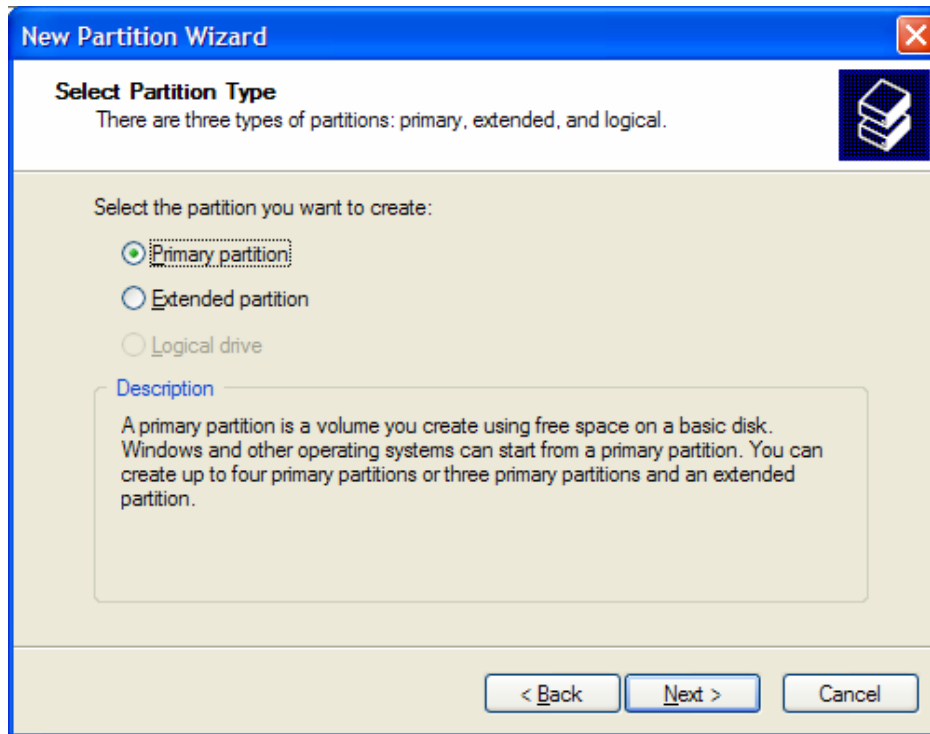
6) Under Disk Management goto “DISK 1” to create a new Partition as show below



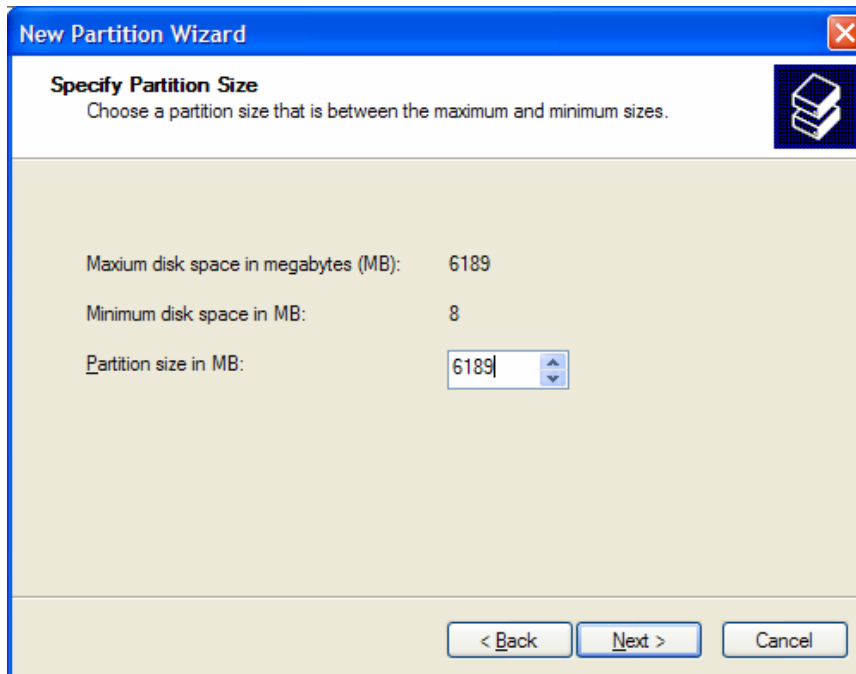
- 5) Right click onto “Disk 1” to create a new partition, Then Click onto next button as show:



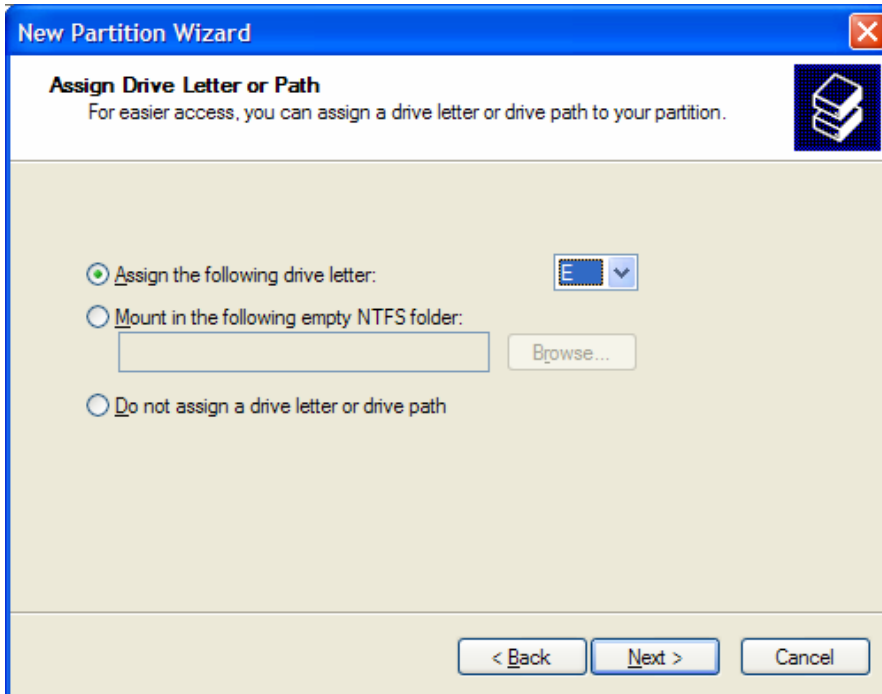
- 6) Than choose the desire partitions shown below and than click next button:



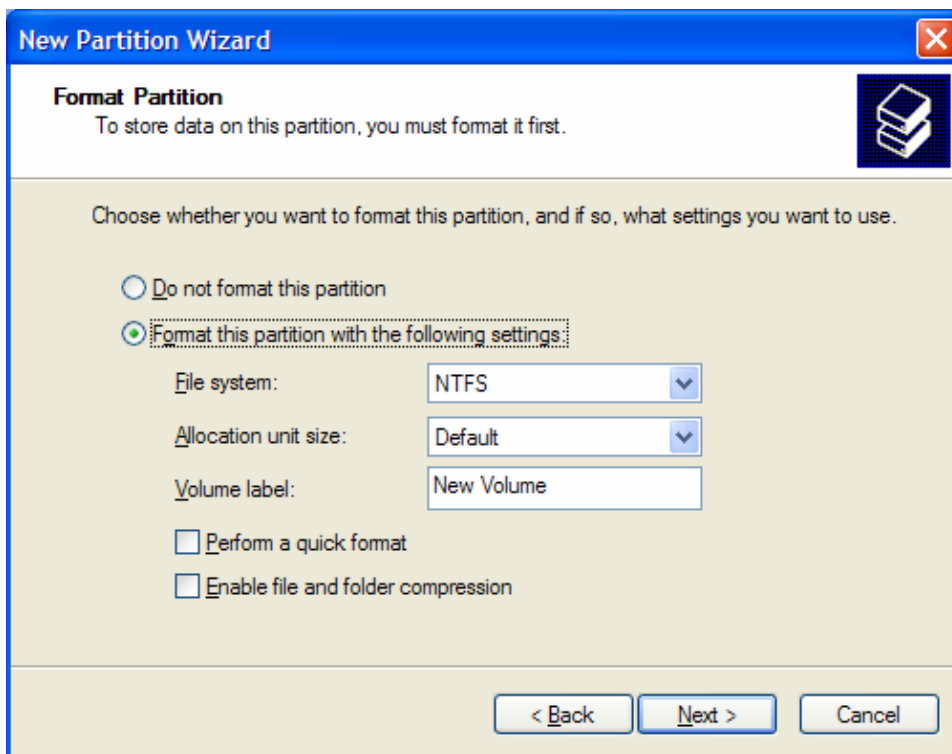
- 7) Then Windows will show the correct hard drive sizes or adjust the desire partition size, Then click next button:



- 8) Than choose the desire assign drive letter as shown below, Than click onto next button:



- 9) After that Windows will ask to format the new drive, Click next button to format the drive shown below:



- 10) Than Click Finish button and the installation is complete and the drive is ready for use.

New Partition Wizard



Completing the New Partition Wizard

You have successfully completed the New Partition Wizard.

You selected the following settings:

Partition type: Primary partition
Disk selected: Disk 1
Partition size: 6189 MB
Drive letter or path: E:
File system: NTFS
Allocation unit size: Default
Volume label: New Volume
Quick format: No

To close this wizard, click Finish.

< Back

Finish

Cancel